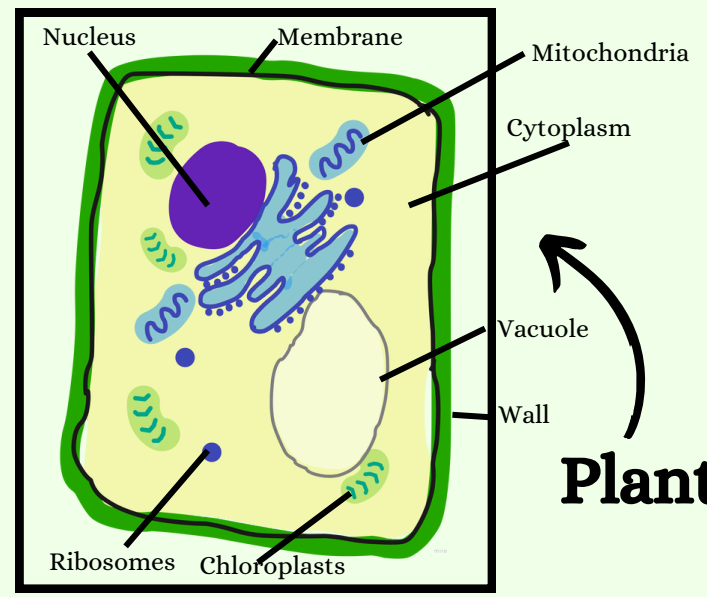


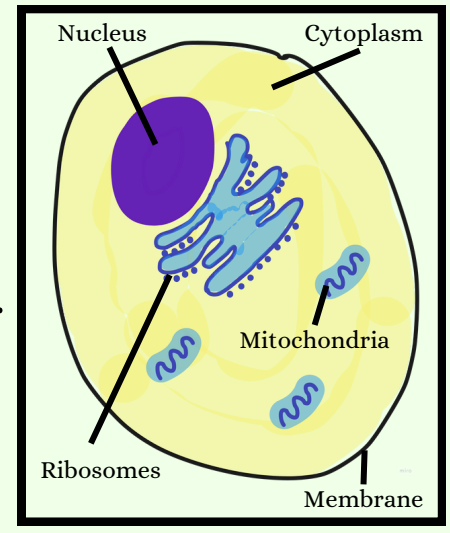
Finish and label



Cells are the basic unit of all forms of life.

A sub-cellular structure is also called an organelle

Labelled diagram



ANIMAL AND PLANT CELLS
ANSWERS
TOP MARKS SCIENCE

Plant

Animal

Definitions

Organelles

Comparison

Match the organelle to its correct function

3 organelles we find in a plant cell but not an animal cell:

1. Chloroplasts
2. Cell wall
3. Permanent vacuole

Tick if present

Organelle	Function
Nucleus	Site of respiration
Cytoplasm	Filled with sap
Chloroplasts	Controls what enters/ exits the cell
Mitochondria	Contains DNA
Ribosomes	Site of photosynthesis
Cell wall	Strengthens and supports the cell
Cell membrane	Protein synthesis
Permanent vacuole	Site of reactions

Organelle	Animal	Plant
Nucleus	✓	✓
Cell wall		✓
Cell membrane	✓	
Mitochondria	✓	
Ribosomes	✓	
Chloroplasts		✓
Cytoplasm	✓	✓
Permanent vacuole		✓